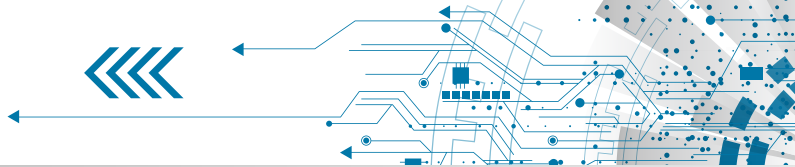
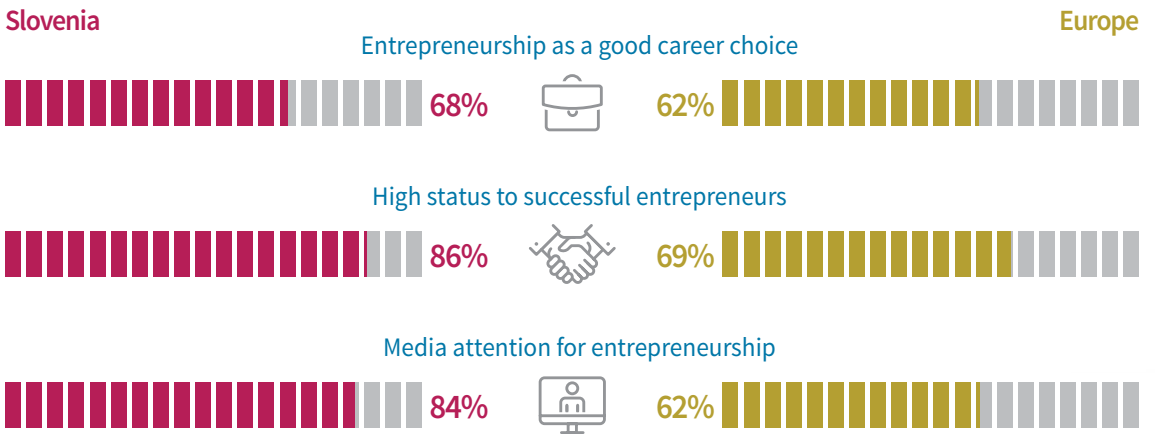


Resilience of Entrepreneurial Activity

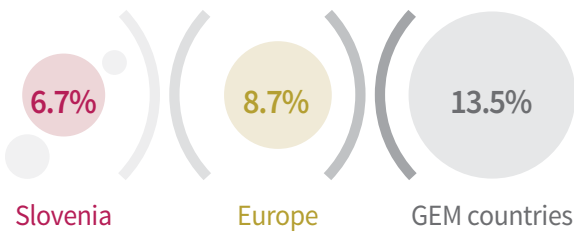
GEM Slovenia 2021



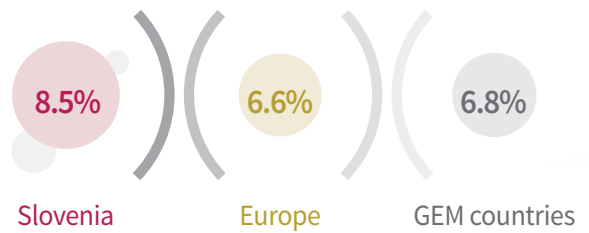
Social values towards entrepreneurship



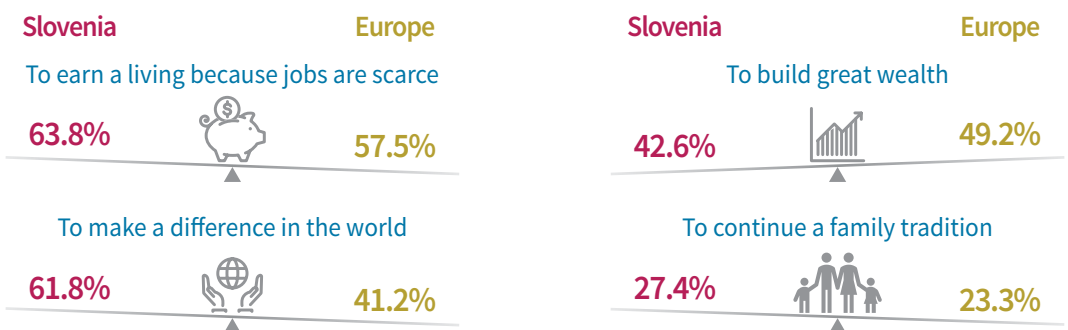
Total early-stage entrepreneurial activity



Established business owners

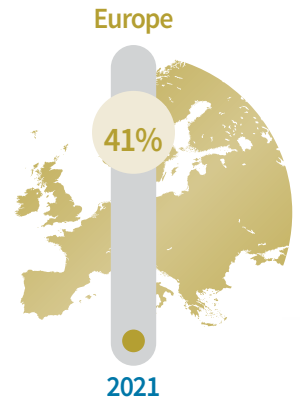
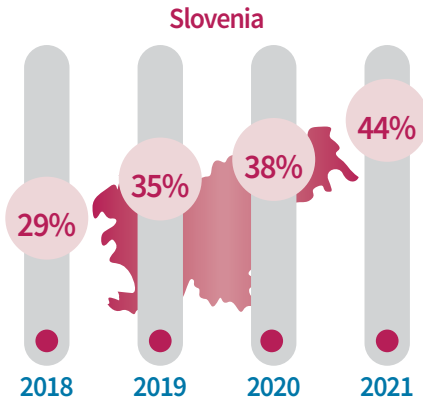


Motivation for entrepreneurship



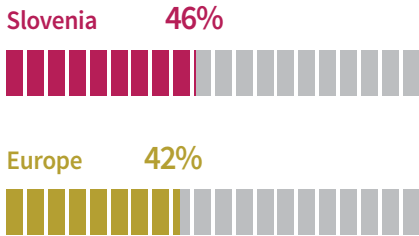
Growth of female total early-stage entrepreneurial activity

Total early-stage female entrepreneurial activity increases in Slovenia for the fourth consecutive year.



Intentions to use digital technologies

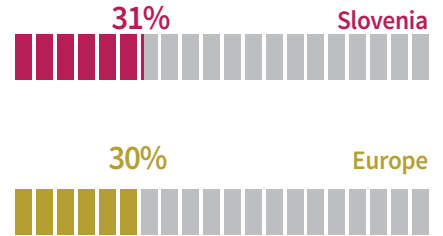
Early-stage entrepreneurs



Use more digital technologies for sales in the next 6 months



Established entrepreneurs

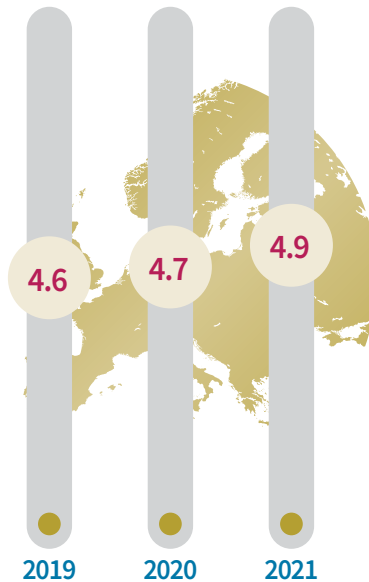


National entrepreneurship context index (NECI)

Slovenia



Europe



The NECI is a composite index that summarizes, on a scale of 0 to 10, the average expert ratings for 13 entrepreneurship framework conditions of the national economy.

In 2021, Slovenia widened its gap with the European (4.9) average in terms of the value of the NECI index.



The members of the Slovenian GEM team are Miroslav Rebernik, PhD. (head), Karin Širec, PhD., Polona Tominc, PhD., Katja Crnogaj, PhD., Barbara Bradač Hojnik, PhD. and Matej Rus, MSc.

Detailed results of the survey can be found on the web pages of the Institute for Entrepreneurship and Small Business Management <http://ipmmp.um.si> on the global site www.gemconsortium.org, where you can find the results of entrepreneurship research over the years, databases and other information about the global survey.